

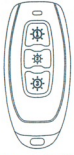


Wireless Remote Switch

User Manual

Knows what you think and what you didn't think

Product Appearance



Wireless remote switch



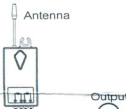
Receiver

* Note: The product depicted in this manual may appear slightly different from what you receive in the box *

Receiver installation

By Screws: Fit the receiver by KA3.5×25 screws on applicable place.

By 3M tapes: Stick the double-side tape on the plain surface of the receiver, then stick the receiver to the applicable place.



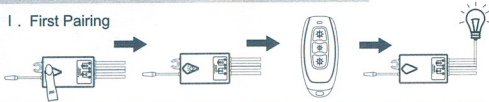
WARNING!
Please power off before installation!



Red, Blue Input wires connect to AC220V or AC110V power supply.
Brown, Blue Output wires connect to lamps.

Code learning/pairing or Delete

I. First Pairing



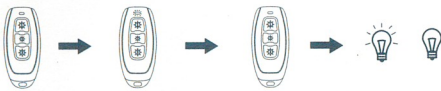
Keep pressing the receiver key for 2s.—Led light is flashing, loose receiver key and enter the learning mode.—Press the remote key which you want to learn code—lamp turns on. Pairing is successful.

II. Add more keys:



Press and hold paired remote key for about 20s till LED indicator on switch blinks rapidly, then loosen your grip, press the new one, finally test whether it can turn on/off the lamps

III. Delete keys:



Press and hold paired remote key for about 60s, during remote LED indicator on remote changes from: firstly blinks rapidly; secondly blinks 8 times slowly, thirdly blinks 9 times at slower speed, finally blinks once at slowest speed, then loosen your grip, press the remote key again cannot control the lamps.