

INSTALLATION INSTRUCTION

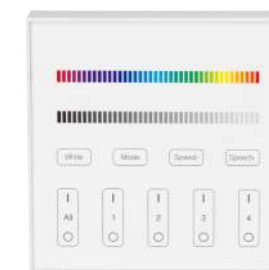
WALL PANEL REMOTE - 4 ZONE

TECHNICAL DATA:

MODEL	VT-2437	VT-2439
INPUT VOLTAGE	3V(2*AAA BATTERY) (Battery not included)	3V(2*AAA BATTERY) (Battery not included)
MODULATION METHOD	GFSK	GFSK
TRANSMITTING POWER	6dBm	6dBm
STANDBY POWER	20µA	20µA
OPERATION TEMPERATURE	-10°C to +40°C	-10°C to +40°C
CONTROL DISTANCE	30m	30m
DIMENSION	86x86mm	86x86mm



(VT-2439)



(VT-2437)



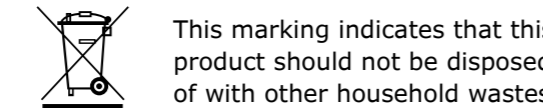
INTRODUCTION & WARRANTY

Thank you for selecting and buying V-TAC product. V-TAC will serve you the best. Please read these instructions carefully before starting the installation and keep this manual handy for future reference. If you have any another query, please contact our dealer or local vendor from whom you have purchased the product. They are trained and ready to serve you at the best. The warranty is valid for 2 years from the date of purchase. The warranty does not apply to damage caused by incorrect installation or abnormal wear and tear. The company gives no warranty against damage to any surface due to incorrect removal and installation of the product. The products are suitable for 10-12 Hours Daily operation. Usage of product for 24 Hours a day would void the warranty. This product is warranted for manufacturing defects only.

WARNING!

1. Please make sure to turn off the power before starting the installation.
2. Installation should only be done by a certified electrician.
3. For Indoor use only
4. Please check the cable, and make the circuit is correct before power on.
5. Please do not use lighting fixtures around the mental area and high magnetic field, otherwise, it will badly affect the control distance.

IN CASE OF ANY QUERY/ISSUE WITH THE PRODUCT, PLEASE REACH OUT TO US AT: SUPPORT@V-TAC.EU FOR MORE PRODUCTS RANGE, INQUIRY PLEASE CONTACT OUR DISTRIBUTOR OR NEAREST DEALERS. V-TAC EUROPE LTD. BULGARIA, PLOVDIV 4000, BULL.KARAVELOW 9B



This marking indicates that this product should not be disposed of with other household wastes.



Caution, risk of electric shock.



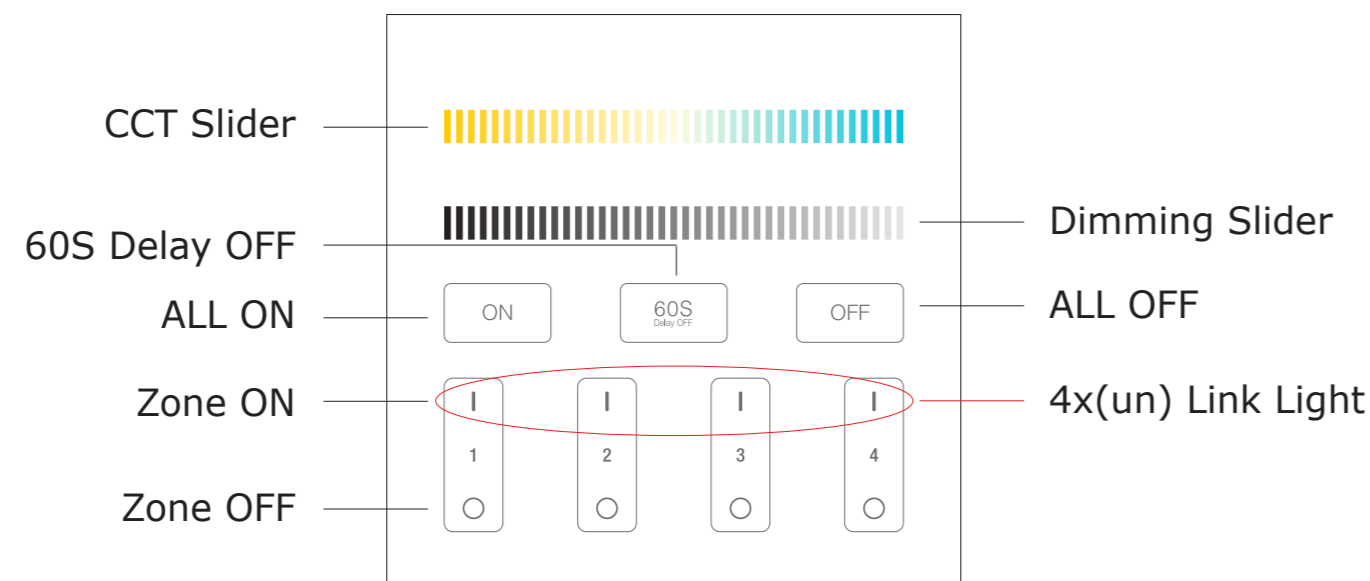
MULTI-LANGUAGE MANUAL QR CODE

Please scan the QR code to access the manual in multiple languages.

FUNCTION OF KEYS

Remark: When touching the button, LED indicating lamp will flash once with different sound (Touch slider with no sound).

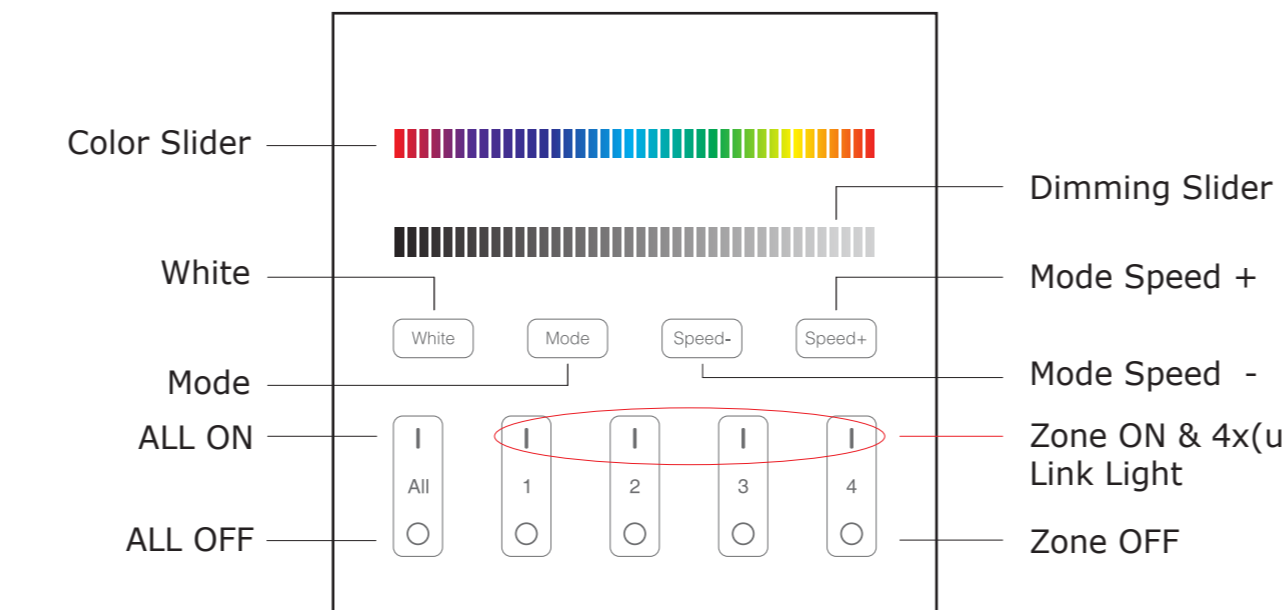
PARTS OF DESCRIPTION



BUTTON FUNCTIONS

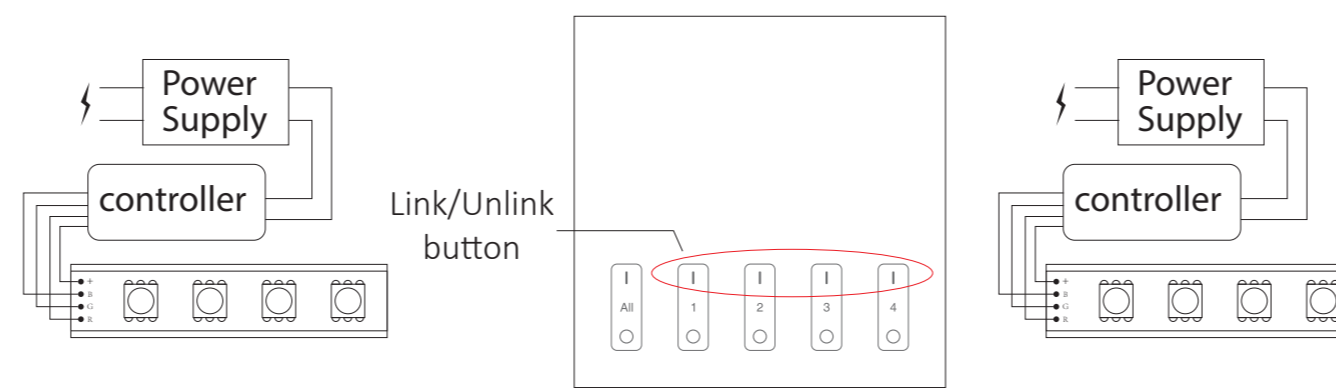
- Touch the slider to change color temperature.
- Touch dimming slider to change the brightness from 1~100%.
- ON**: Touch master ON, turn on all linked lights. Long press 5 seconds to turn ON the indicating sound.
- 60S**: When the light is ON, press "60S Delay OFF", the light will be OFF. Automatically after 60 seconds.
- OFF**: Touch master OFF, turn off all linked lights. Long press 5 seconds to turn OFF the indicating sound.
- |**: Touch Zone ON, turn on zone-linked lights.
- : Touch Zone OFF, turn off zone-linked lights.

CONTROLLER FUNCTIONS



- Touch color slider, choose the color you want.
- Touch dimming slider to change the brightness from 1~100%.
- |**: ALL ON: Touch to turn on all linked lights. Long press 5 seconds to turn ON the indicating sound. Zone(1-4) ON: Touch zone ON, turn on zone-linked lights.
- : ALL OFF: Touch to turn off all linked lights. Long press 5 seconds to turn OFF the indicating sound. Zone(1-4) OFF: Touch zone OFF, turn off zone-linked lights.
- Speed-**: Slow the speed on present dynamic mode.
- Speed+**: Accelerate the speed on present dynamic mode.
- White**: Touch white button to white light mode.
- Mode**: Switching modes.

LINKING INSTRUCTION



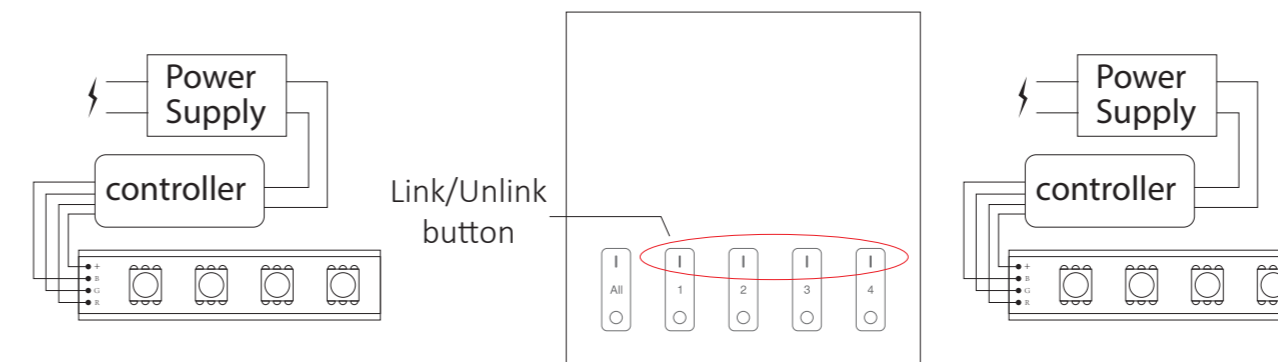
LINK

- Switch off the light, after 10 seconds switch on again.
- When the light on, short press any zone of " " 3 times within 3 seconds.
- The light blink 3 times slowly means the linking is done successfully.



If the light not blink slowly, the linking failed, please switch off the light again, and follow the above steps again.

UNLINKING INSTRUCTION



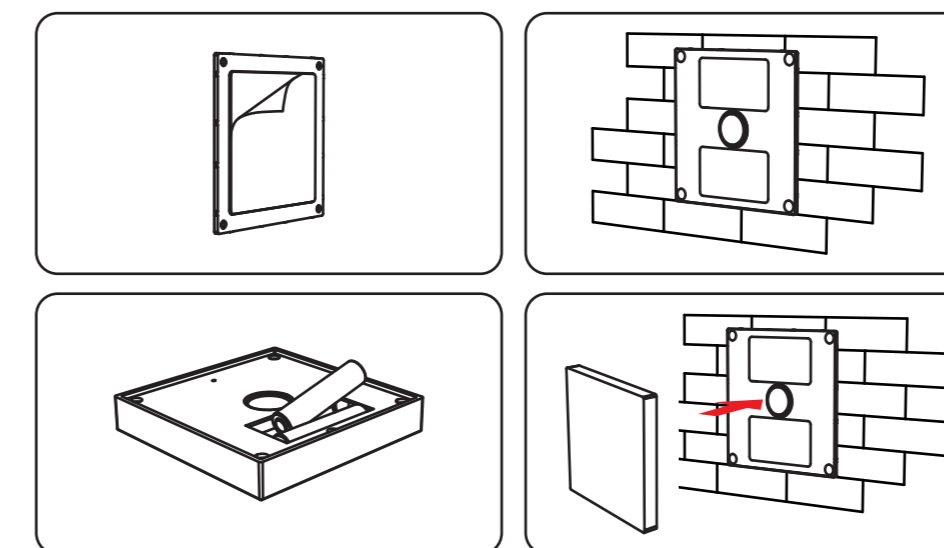
UNLINK

- Switch off the light, after 10 seconds switch on again.
- Switch off the light, after 10 seconds switch on again. Unlinking must be the same zone with the Linking
- The light blinking 10 times quickly, means the unlinking successfully.



If the light not blink quickly, the unlink failed, pls switch off the light again, and follow the above steps to unlink again.

INSTALLATION DIAGRAM

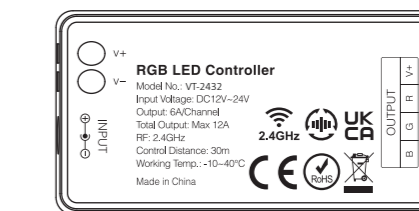


INSTALLATION

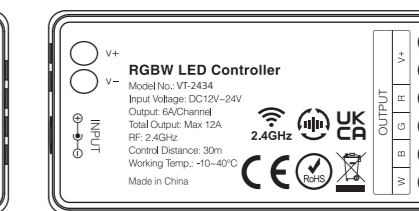
1. Tear out the back tape.
2. Stick the holder on the position where you want.
3. Install 2*AAA battery.
4. Put the rotating switch on the front of holder.

LINKING/UNLINKING DEVICES

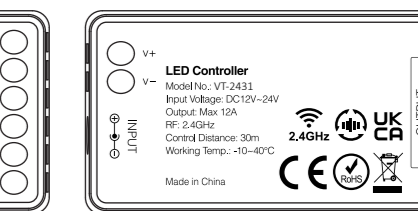
Compatible with the below devices (Not included; available to buy separately)



(SKU: 2912
VT-2432)
(NOT INCLUDED)



(SKU: 2913
VT-2434)
(NOT INCLUDED)



(SKU: 2911
VT-2431)
(NOT INCLUDED)

